

ILLUSTRATIONS

OF THE

BOTANY

AND

OTHER BRANCHES OF THE NATURAL HISTORY

OF THE

HIMALAYAN MOUNTAINS.

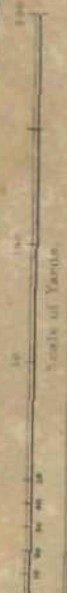


REFERENCES.

1. Linnæus, Garden.
2. Medicinal Garden.
3. Agricultural Garden.
4. Horticultural Department.
5. Ditch Canal Tree nursery.
6. Nursery for Fruit Trees.
7. Nursery for Fruit Trees.
8. Nursery for Fruit Trees.
9. Nursery for Fruit Trees.
10. Nursery for Fruit Trees.
11. Nursery for Fruit Trees.
12. Nursery for Fruit Trees.
13. Nursery for Fruit Trees.
14. Nursery for Fruit Trees.
15. Nursery for Fruit Trees.
16. Nursery for Fruit Trees.
17. Nursery for Fruit Trees.
18. Nursery for Fruit Trees.
19. Nursery for Fruit Trees.
20. Nursery for Fruit Trees.
21. Nursery for Fruit Trees.
22. Nursery for Fruit Trees.
23. Nursery for Fruit Trees.
24. Nursery for Fruit Trees.
25. Nursery for Fruit Trees.

Plan of the
Botanic Garden
SAHARUNPORE.

J. V. Bailey, Superintendent, 1853.



ILLUSTRATIONS

OF THE

B O T A N Y

AND

OTHER BRANCHES OF THE NATURAL HISTORY

OF THE

HIMALAYAN MOUNTAINS,

AND OF THE

FLORA OF CASHMERE.

VOL. II.—PLATES.

BY J. FORBES ROYLE, M.D., V.P.R.S.,

LATE OF THE MEDICAL STAFF OF THE BENGAL ARMY;

Member of the Linnean, the Geological, the Horticultural, and the Royal Asiatic Societies of London; of the Asiatic and Medical Societies of Calcutta; Member of the Imperial Society Nature Curiosorum, fyc. &c.; late Superintendent of the Honourable E.I. Company's Botanic Garden at Saharunporè;

PROFESSOR OF MATERIA MEDICA AND THERAPEUTICS, KING'S COLLEGE.

LONDON:

WM. H. ALLEN AND CO.,
LEADENHALL STREET.

1839.



TRIGONOSTEMON DIPLOPETALUS, Thw.

West Newman imp.



DIMORPH HOCALYX GLABELLUS. Th»r.

West, Newman; imp.

del.
lith



ADEN O CHI, ^ N A ZEYLANICA.; Thw.

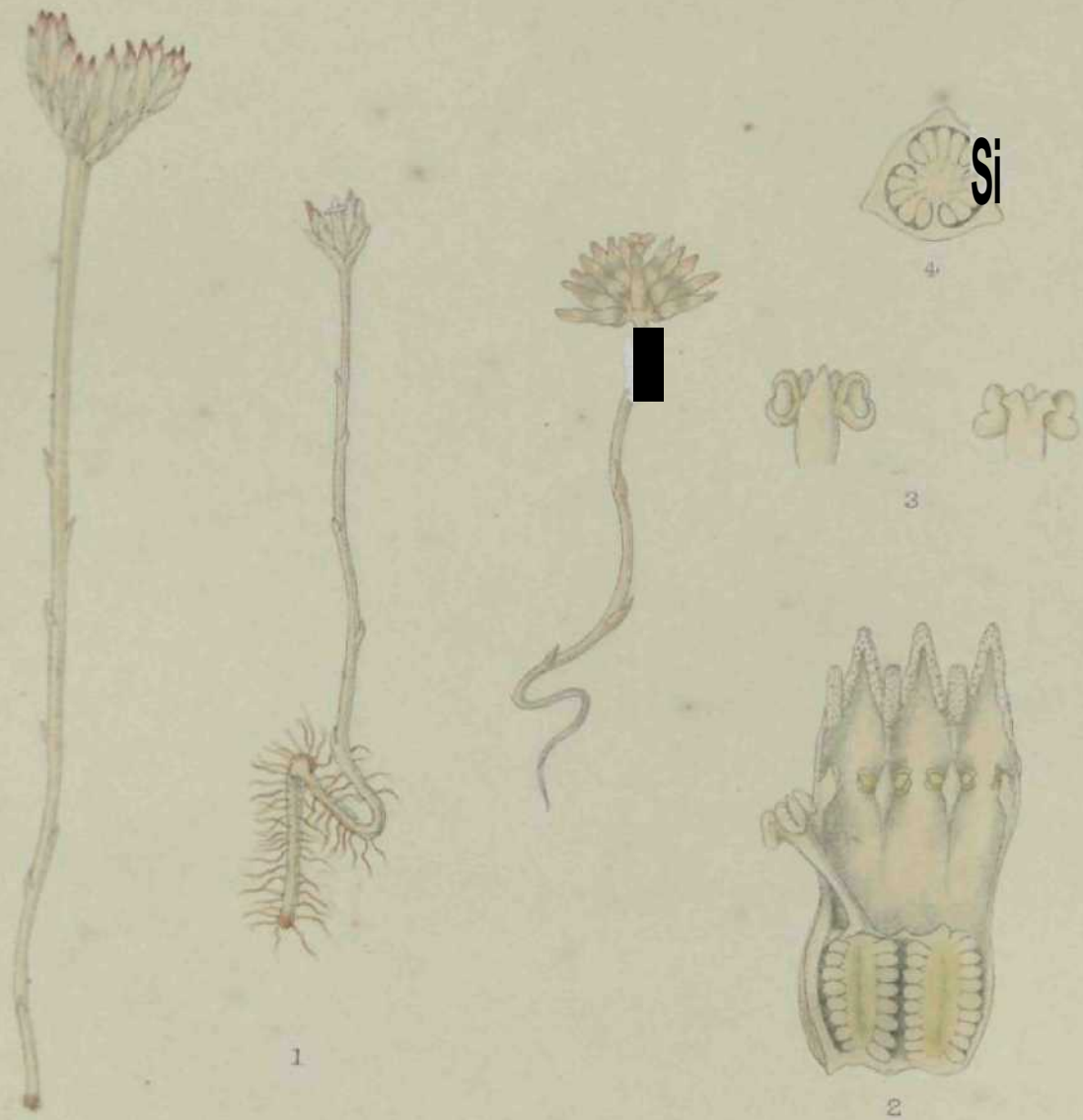
West. Newman sculp.



CELTIS CINNAMOMEA, Lindl.

West/Newtonian 1809

Alma del
1809



BURMANNIA CHAMPIO *nil* Thw.

Walt. & Arn. an. 1809.

ol

r9



BOLBOPHYLLUM

ELEGANS, Gardn.

Wiwi.Nieman imp



VMBIDIUM ENSIFOLIUM, sw. var. HŒMATODES Trin.

De Alvo del Reyar. lith.

West, Newman del.



COELOGYNE ODORATISSIMA Lindl.

West. Newman imp.



¥

West, Newman imp.

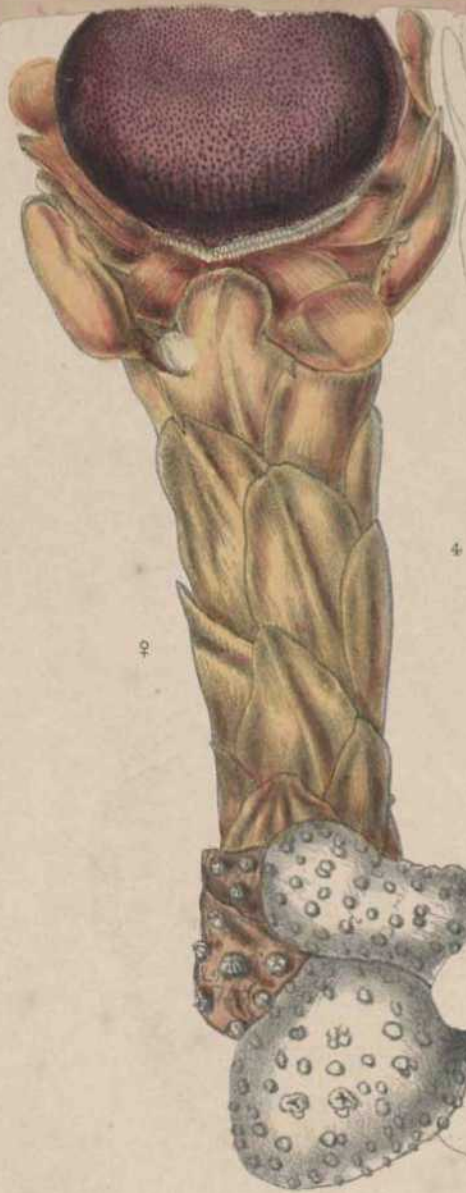
VANILLA MOONII



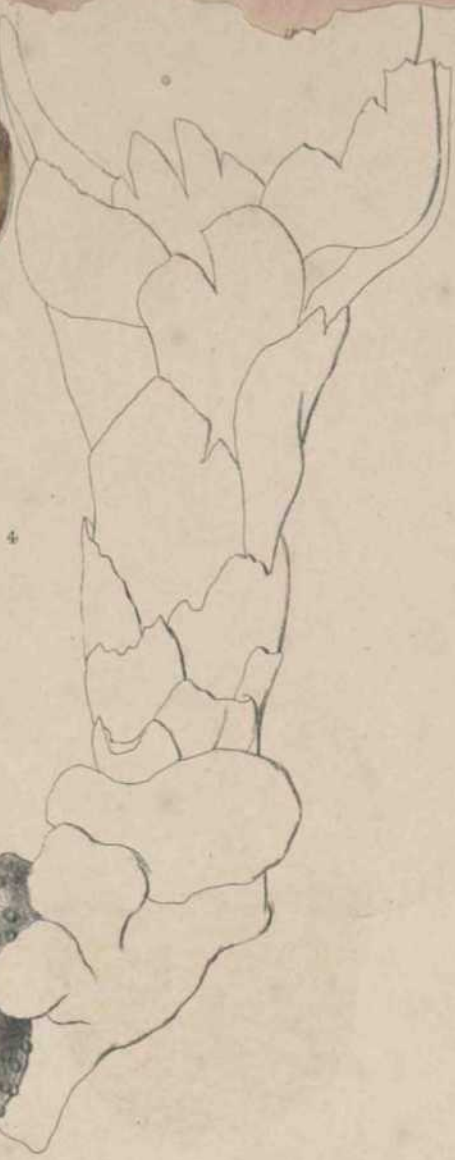
CURCUMA GUGANTHA.7W--

W.M.L.





10



4



1

♂

H. fc W. De Alwis ds. l.
R. U. Argan Kth.

West, Newmann, imp.

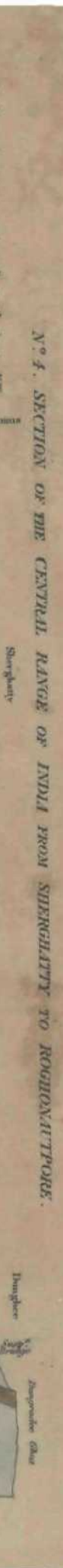
BALANOPHORA THWAITESII, *Eickl.*

100
 500
 1000
 1500
 2000
 2500
 3000
 3500
 4000
 4500
 5000
 5500
 6000
 6500
 7000
 7500
 8000
 8500
 9000
 9500
 10000

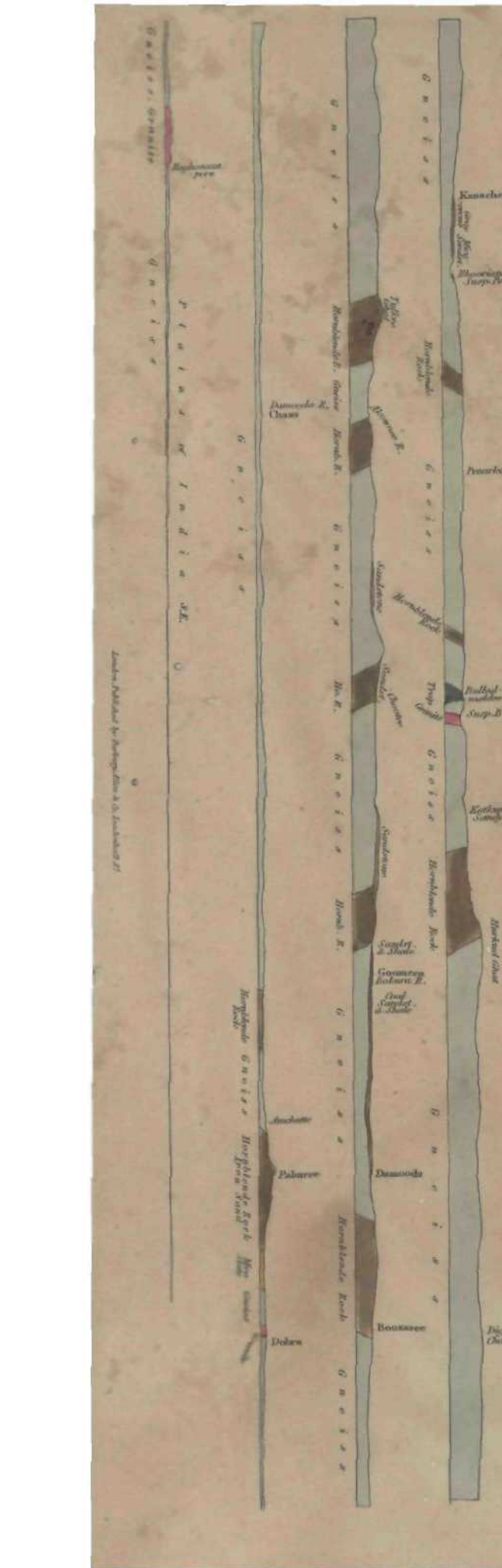
No. 2. SECTION OF THE HIMALAYAN MOUNTAINS FROM SHIRPOUR TO THE SOURCES OF THE JUNA & TONSE RIVERS.



No. 3. SECTION OF THE COAL FORMATION FROM PACHETTU TO CHINNAKOUZE ON THE DAMODI.



No. 4. SECTION OF THE CENTRAL RANGE OF INDIA FROM SHERGHATY TO ROUGHONATTPORE.

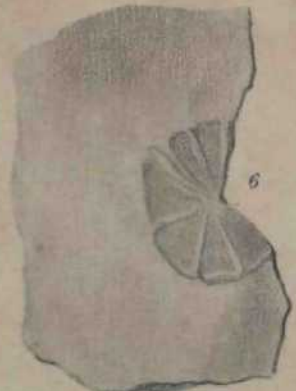




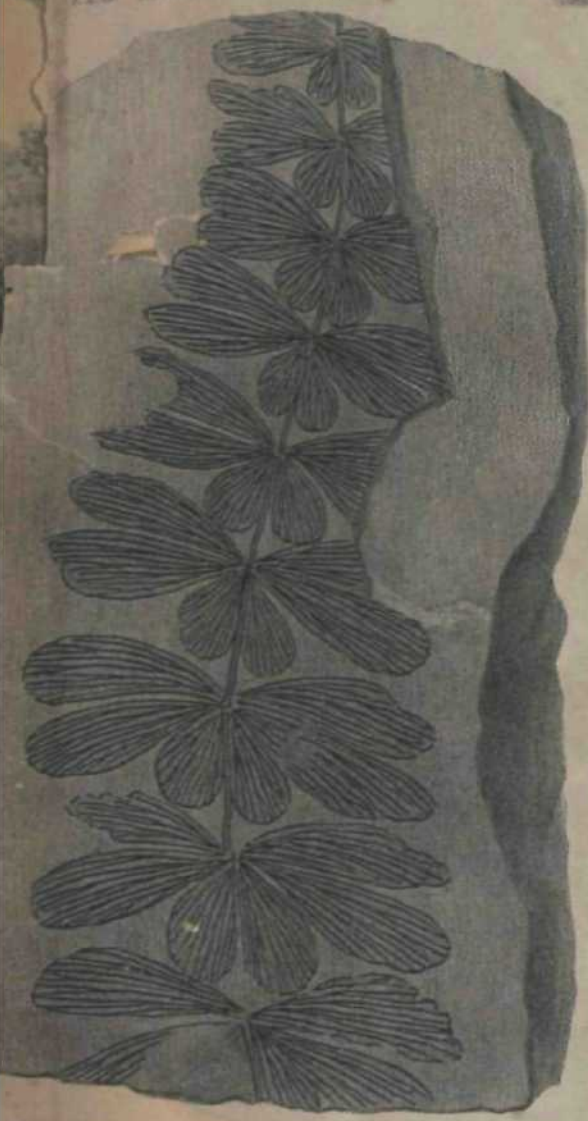
123 *Vertebraria*



4. *Pecopteris Lindleyana*



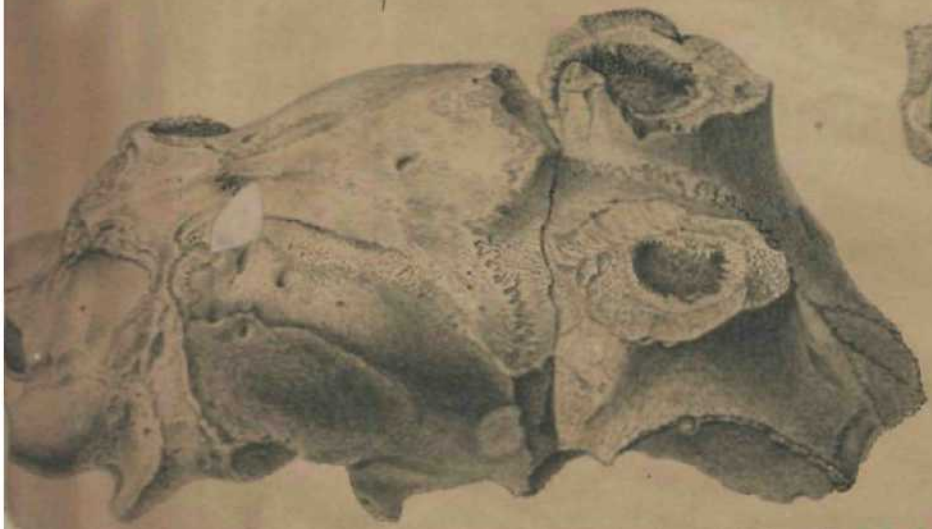
5 & 7 *Vertebraria radiata*



8. *Furcygia speciosa*



9. *Glossopteris danica*

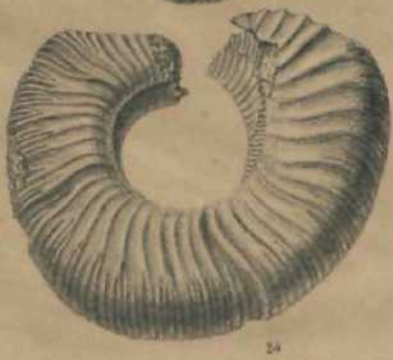
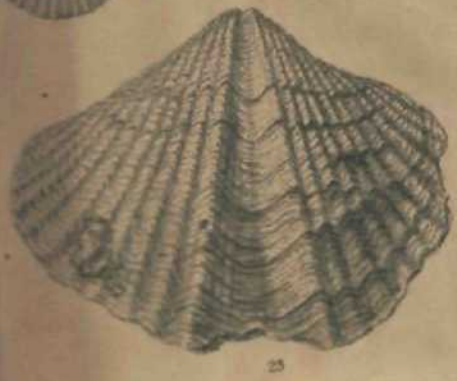
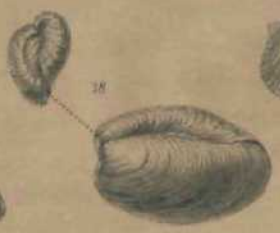


Fossil Bones obtained

the line of Snowy Peaks.



Fossil Teeth found by Lieut. Cautley in the lower Range on the S.W. or plainward base of the Himalayas.



Fossil Shells discovered by M^r Gerard in the elevated Valley of the Spiti, N.W. of Kumaon.
Published by Parbury Allen & C^o London 1847

Engraved by G. S.



Lagomys alpinus Desm. L. Pika. Geoff.

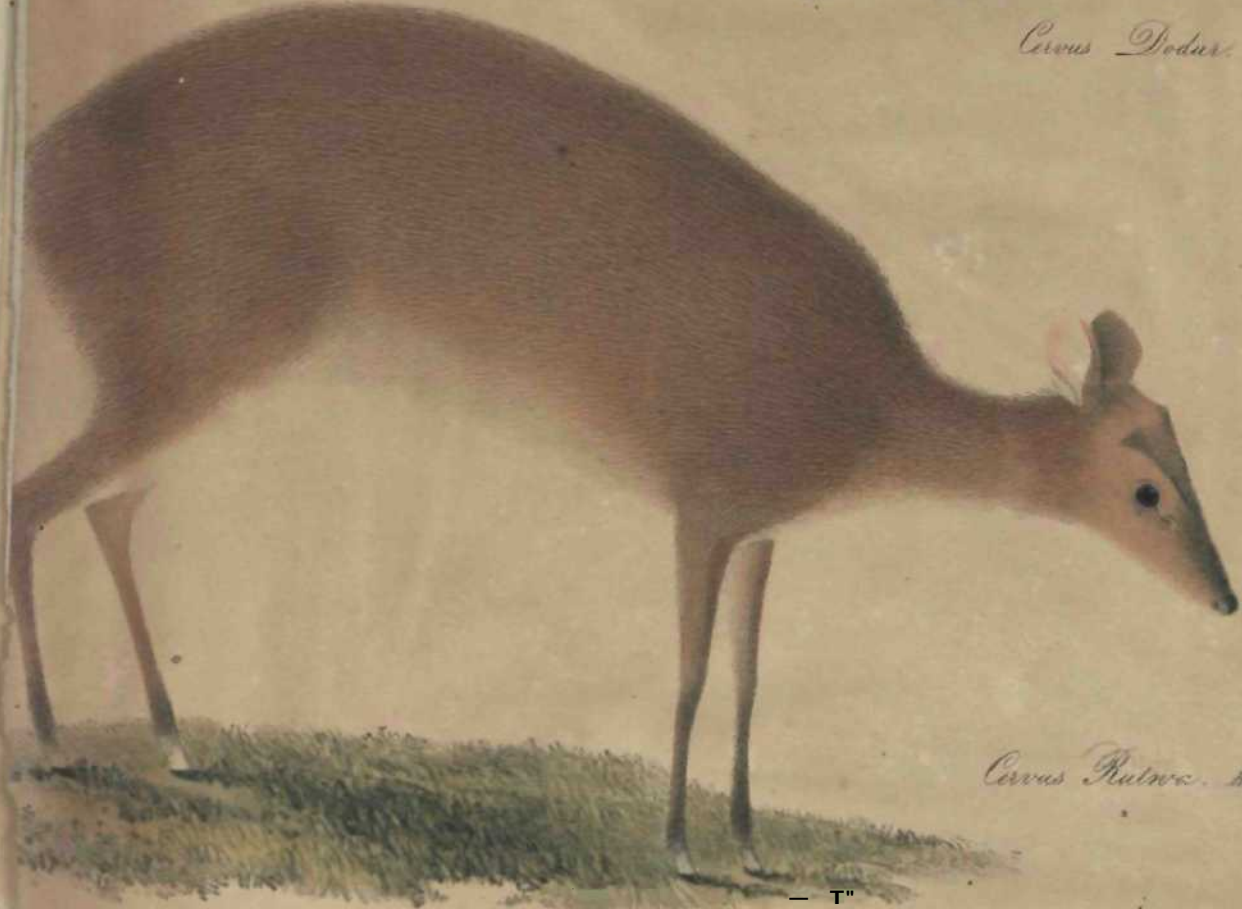
Mountain. Lat 50. Elev 11500

London, Published by Parbury Allen & Co. Ludlowhall St.

Printed by ...



Cervus Bodur



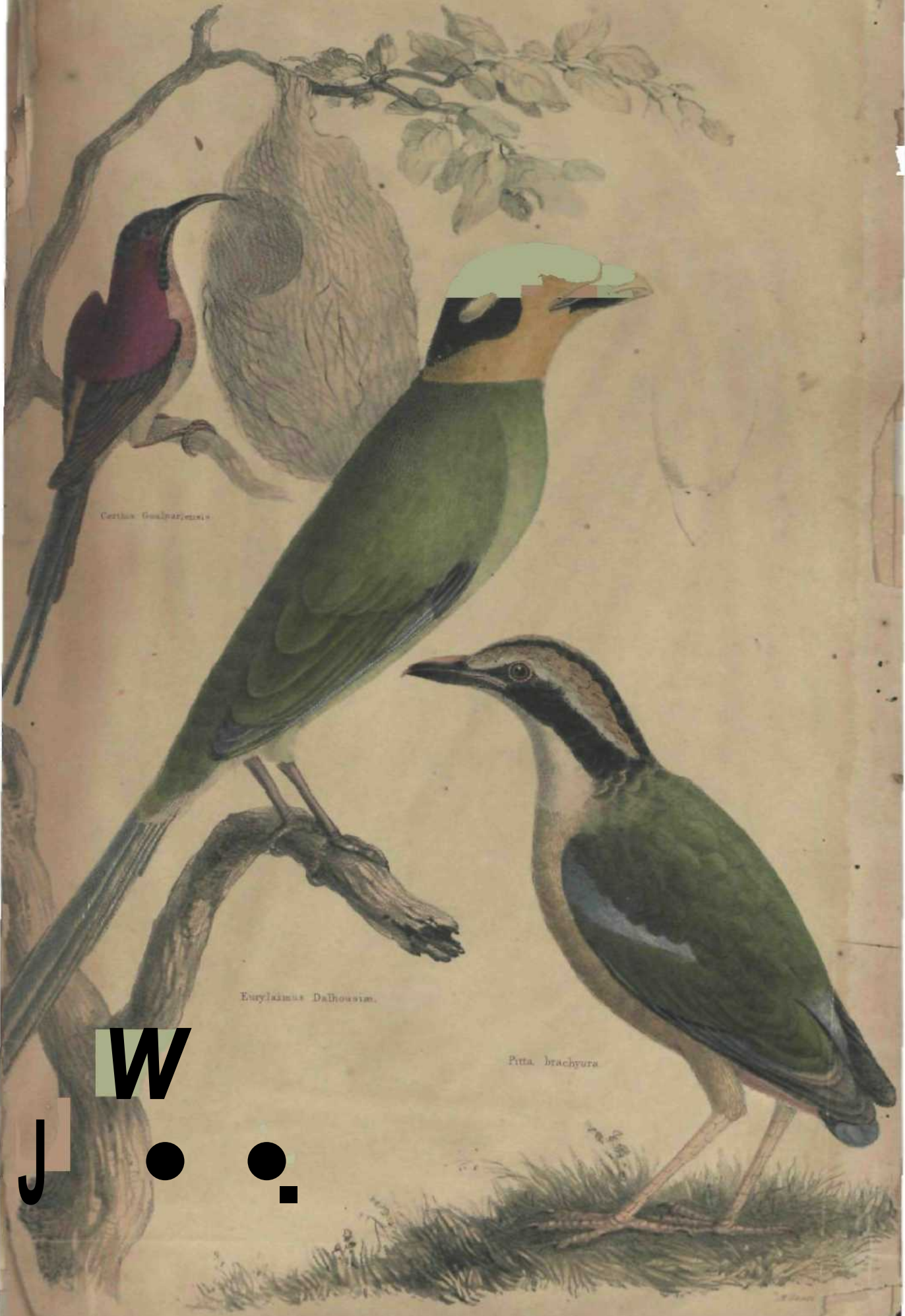
Cervus Rutwa. fides



Fossils of the Sub-Himalayan, & Sewal k Hills

M. GRAY del.

Published by Allen & Co. Leadenhall Street
 2 and 3 from the Author

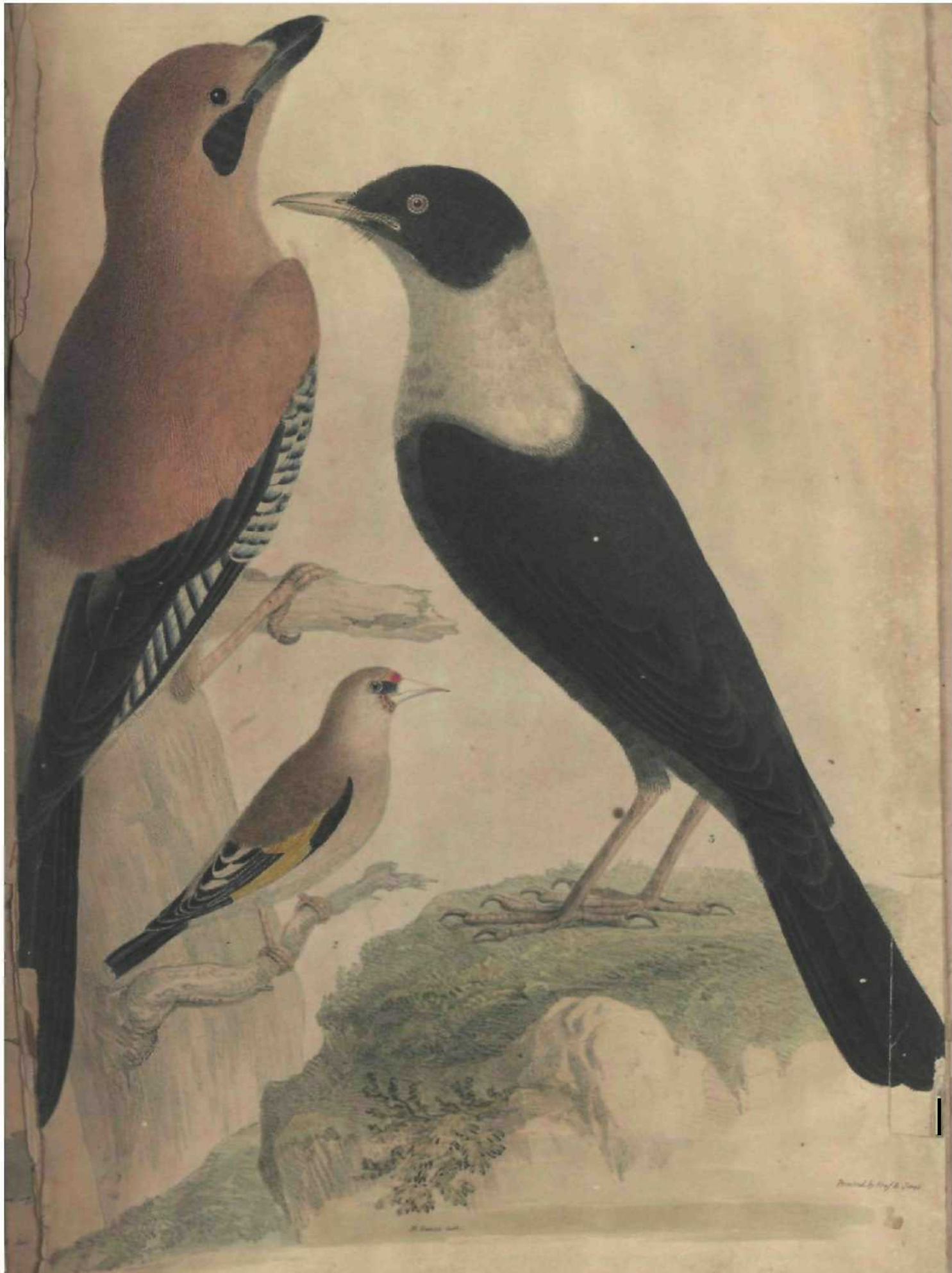


Certhia Goulparjensis

Eurylaimus Dalhousie.

Pitta brachyura

W
J . .



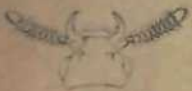
1. *Geothlypis trichas*

2. *Catherpes mexicanus*

3. *Turdus albicollis*

Published by Fisher, Allen & Co. New York, N.Y.

Painted by J. G. Cooper



- 1 *Cetonia sayi* Hope
- 2 *Scarabaeus orientalis* Hope
- 3 *Anthrenus phoeniceus* Hope
- 4 *Lucanus cervus* Hope
- 5 & 6 *Lucanus hallei* Hope

- 7 *Lucanus asperatus* Hope
- 8 *Lucanus irregularis* Hope
- 9 *Lucanus humulatus* Hope
- 10 *Lucanus cyaneus* Hope
- 11 *Lucanus opaculus* Westwood
- 12 *Lucanus microgyna* Westwood



J. G. Smith del.

- 1 *Campylotes histrionicus.*
- 2 *Vanilla pulchella.*
- 3 *Papilio paralecta.*
- 4 *Papilio Neumaen.*
- 5 *Mantia Reylei.*

- 6 *Scutellera pulchella.*
- 7 *Myrtillocnistis transversalis.*
- 8 *Chalcidius Himalayanus.*
- 9 *Nyctorbea Reylei.*
- 10 *Aspilota maculata.*



M. Goussier del.

Ranunculus polypetalus 2. *Esopyrum grandiflorum* 3. *S. microphyllum*

Published by Goussier, Elzev. & Co. Amsterdam, 1791.

Printed by Goussier.



Delphinium Cashmerianum Royle

Published by Parbury, Allen & Co. Stationers, Strand, July 1833.

Printed by G. & J. Sayer

M. Gussone del.



Accutium heterophyllum var.

Published by Perkins, Allen & Co. London, 19 July 1853.

Printed by W. G. & Co.

r



Comicyfuga frigida. var.

Published by Parbury Allen & Co. Londonhall 11



Meconopsis aculeata Sims

London, Published by Parkers, Allen & Co. Strand, 1817

Printed by G. G. & Co. 1817



1. *Corydalis Kashmiriana*: 2011 2. *C. Yovaniana*: 2012

Published by Purday, Alton & Co. London: 1811
 Printed by W. Phillips



W. H. Edwards del.

J. G. Smith sculp.

Tauscheria desertorum

Published by Parbury Allen & Co. Ludlowhall Street.

Printed by W. H. Jones.



Viola Sorpens var. 2 *Viola reniformis* var. 3 *Viola Hanawirensis* var.



A - *Polygala myrsinites*

M. Goussier del.

Polygala furcata v. *Polygala croc.* D. *Polygala triphylla*.

Published by Parkery, Allen & Co. London, 1811.

Printed by G. & J. Deane



Lychnis fimbriata

1. *Lychnis latifolia* 2. *Lychnis angustifolia* 3. *Arenaria festucoides*



m

1. *Arenaria latifolia*. 2. *A. angustifolia*. 3. *Arenaria festuoides*.



Grewia elastica. Rostk.

Published by Parry, Allen & Co. London. 1811.

Drawn by Wm. Edwards.



1. *Gossypium herbaceum.* 2. *G. arboreum.*

Published by George Allen & Co. London.

London 1840.

J. Smith del.

Compositae 1817



Cassia acutata

Illustrated by George Jones & C. Anderson from
 Journal de Botanique

1817



J



Cissus rosea

2nd 2 - *Cissus capreolata*



Geranium Lindleyanum

Painted by George Allen & C. London 1835



1. *Impatiens bicolor*

2. *Impatiens glandulifera*

M. J. Poir. 1804

Published by Debny, No. 8, "Lombard St."

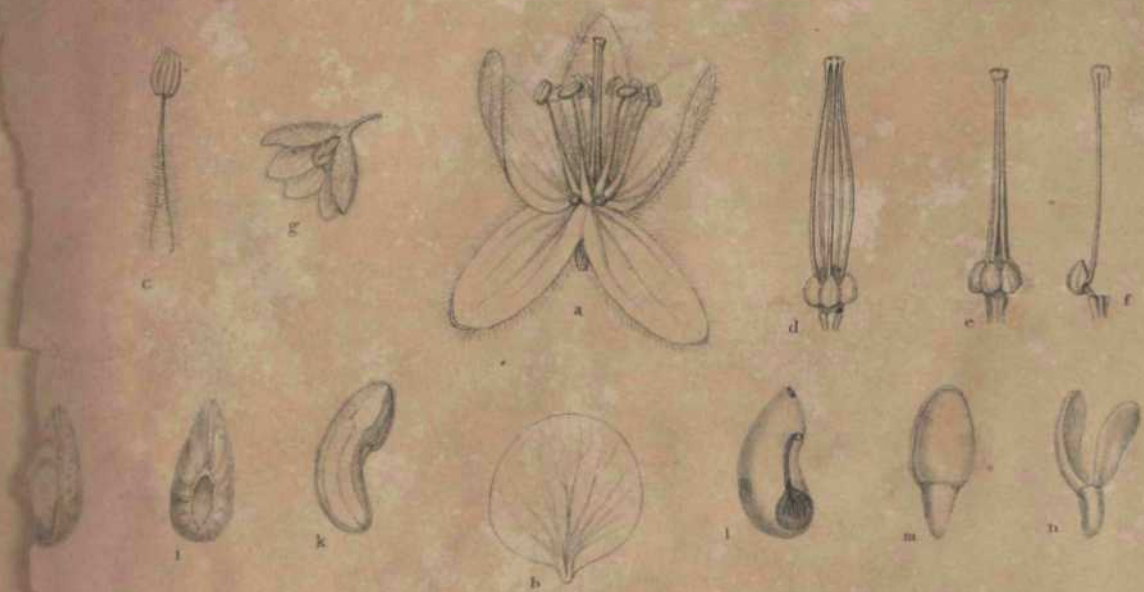
Amsterdam, 1804



Dufourea himalayana, DC.

Illustration of the Dufourea himalayana, DC. (Dufourea himalayana, DC.)

Printed by G. & C. Whittaker, London.

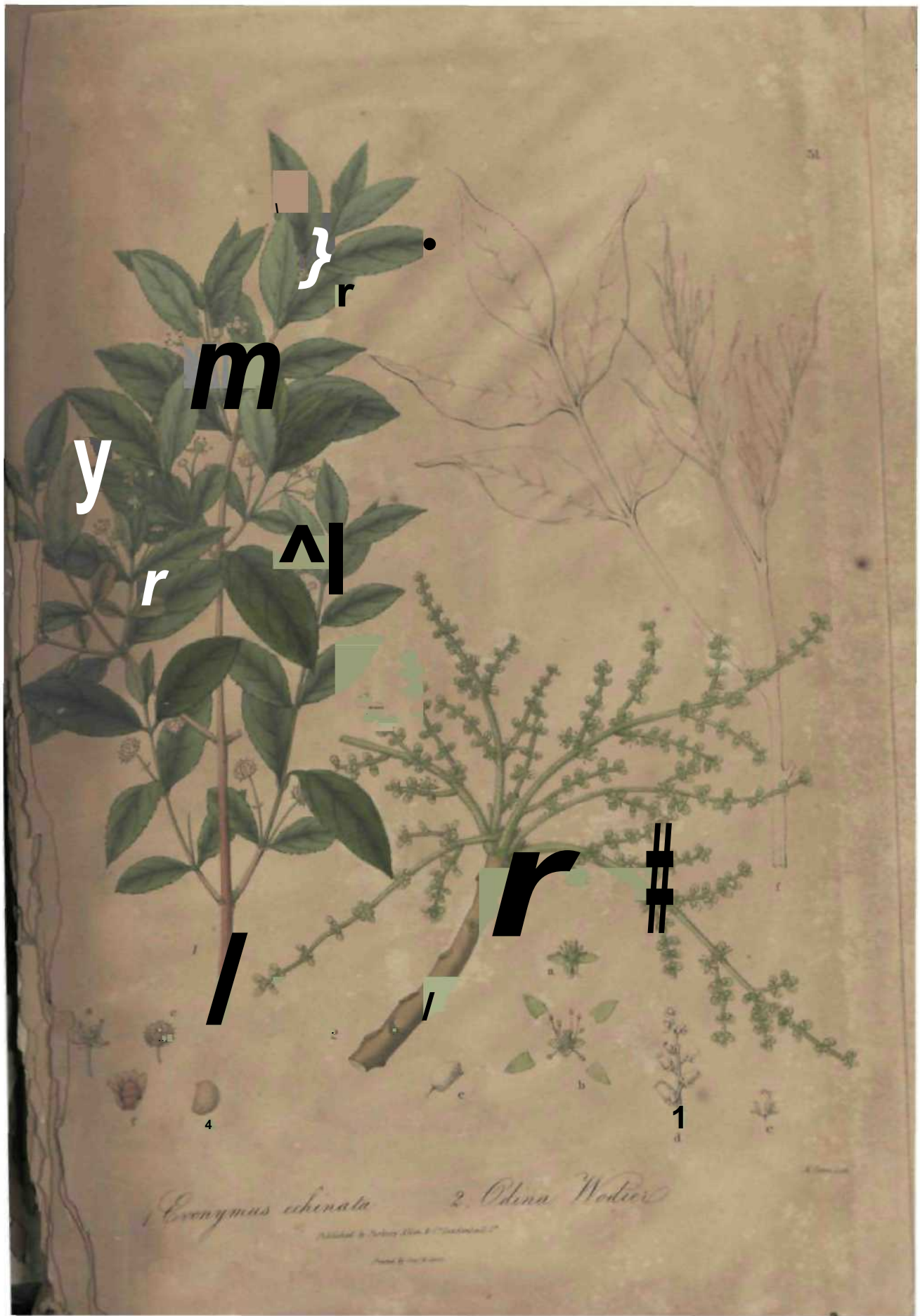


Roburstenia odorata

Published by George Allen & Co. London 1877

Printed by J. & J. Smith

J. Smith del.



Evonymus alatus 2. Odina Wedd.

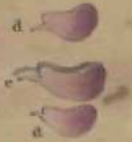
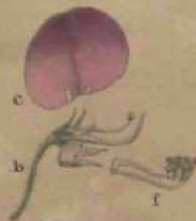
Published by ...
Printed by ...



1. *Thermopsis barbata.*

2. *Edwardsia mollis.*

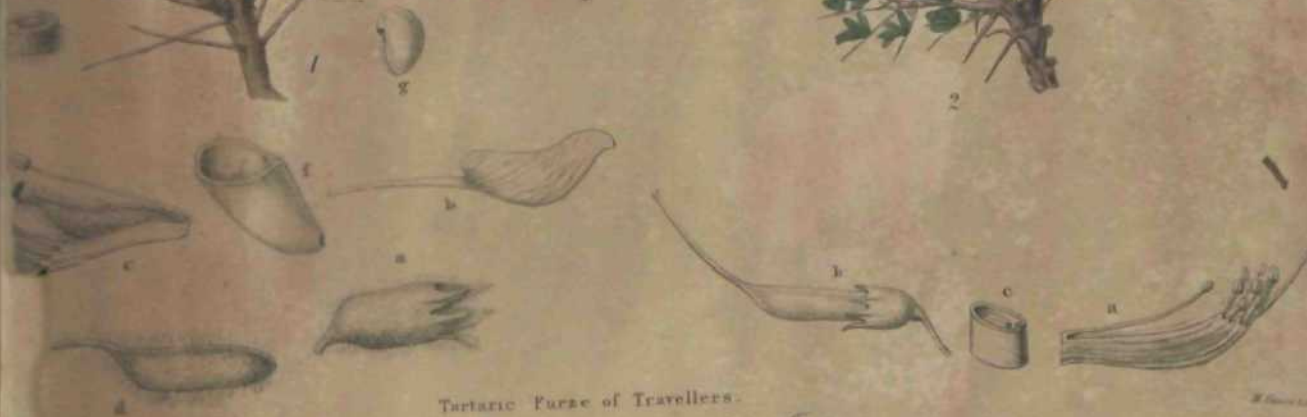
Delincentibus & Sculpentibus J. G. Schumacher & J. G. Schumacher.



Ulex lagopoides.

2. *Astragalus leucocephalus.*

Published by Parkinson, Aitken, & Co. London, 1777.
Printed by W. & A. G. Smith.



Tartaric Furze of Travellers.

Caragana Gerardiana.

2. *Genista versicolor.*

Published by Debny Allen & Co. London, 1840.

Printed by W. B. ...



Vicia commonis.

2. *Smilax ciliata.*

Delin. et Sculp. J. B. de L'Esclapart, 1788.

Printed & Sold by J. B. de L'Esclapart, 1788.



Aquilaria Agallocha.

2. Astrogalus Grahamianus.

Published by Purday Allen & Co. London 1847
Drawn by Wm. B. Wood

J. Smith del.



Cassia (Senna) lanceolata.

Cultivated in India.



Punica granatum

2. *Corasus cornuta*



1 7

2

o f *

Savaria data

Palibardo alcyona

Published by George Allen & Co. London
Printed by W. & A. G. Smith



1. *Potentilla Canadensis*. 2. *Potentilla fruticosa*. 3. *Sibbaldia parviflora*.

Painted by Frederick Stearn, R.S. London 1877

Printed by W. & A. G. & Co.



1. *P. Saundersiana*

2. *P. microphylla*

3. *P. Inglisii*



Rosa sericea.

2. *Rosa Willbiana.*

M. G. 1828



Cnicus cordata

Epilobium lasium



1. *Lythrum Cashmerianum*

2. *Myricaria bracteata*

Published by George Eder & Co. London 1877

Made in England



Gonocarpus latifolia

Sonchella tenera



Philadelphus tomentosus

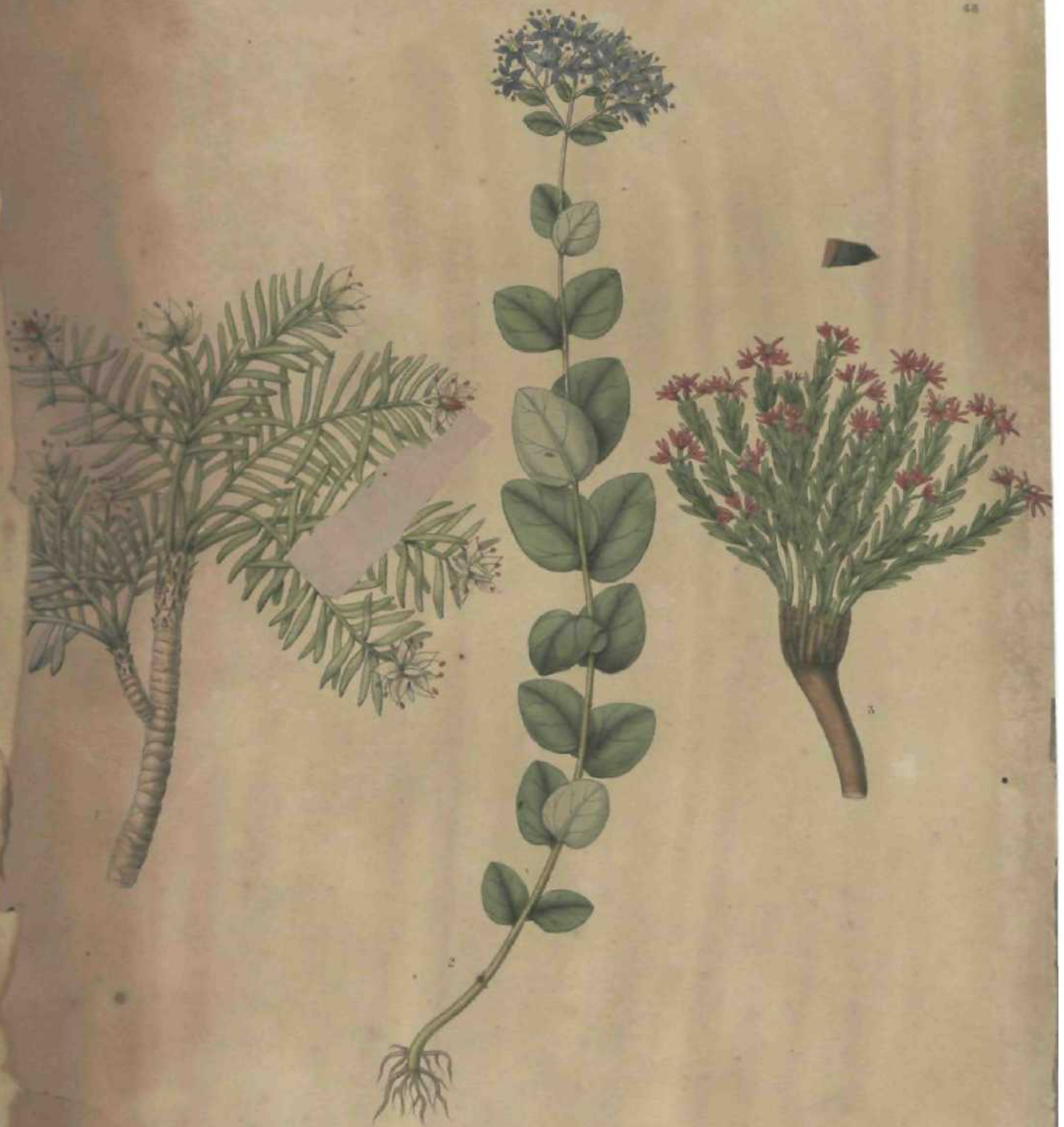
Quercus corymbosa

Published by Parbury Allen & Co. Londonhall Street
Dumfries & Co. 1825

H. Gussone del.



1. Cucumis. 2. *C. pseudo-Colocynthis*. 3. *Cucumis Hardwickii*.
Published by Darby Allen, & Co. London 1817.



1. *Sedum macrocarpum.*

2. *Sedum azureum.*

3. *Sedum coccineum.*

Published by Botany Ellen & C^o Londonhall. 17

Painted by Miss Kinn.

J. Sims del.



Saxifraga imbricata.

2. *S. alata*

3. *S. ramulosa*

Published by Parbury Allen & Co. Stationers St.



1. *Parnassia scopophylla*.

2. *Parnassia spirulosa*.

3. *Parnassia rubicola*.

Published by Jeffrey Allen & Co. London.



Eruocycla glauca.

2. *Eruocycla nodata.*

Published by Carey, Allen & Co. New York
Printed by Prof. Silliman



Conium maculatum

2. *Hymenolana javanica*

5



1. *Kohautia coccinea* 2. *Lonicera bracteata*.

Published by J. Nees, Berlin, & T. Nees, London, 1848.
Printed by G. Nees.



Nardostachys Salmansii

Published by J. & W. G. & Co. London 1842

M. Smith del.



f

Morina Wallichiana.

Scabiosa speciosa.



Lechinops aurea

Cyathidium taraxacifolium

Published by Robert Smith & Co. London 1820



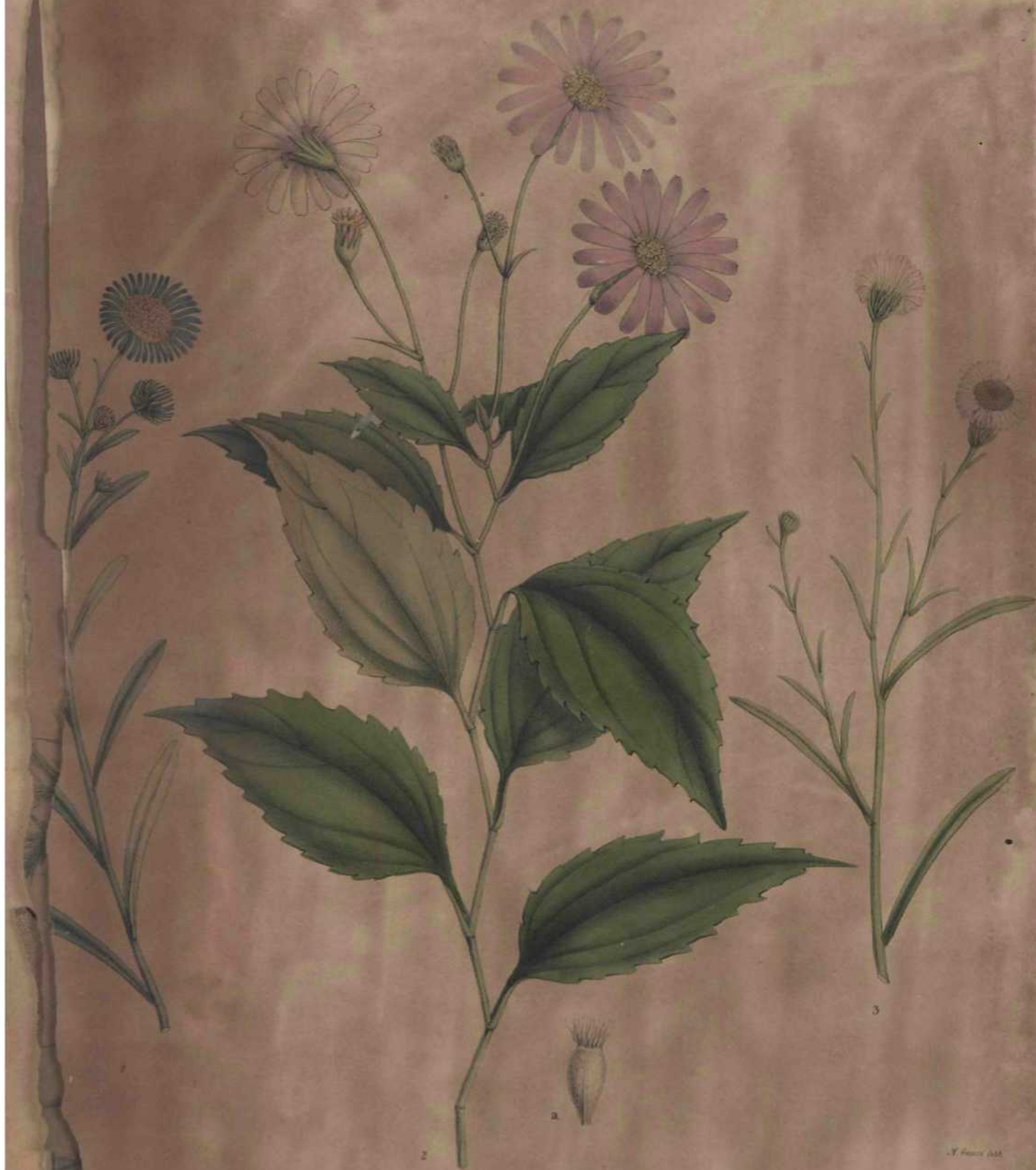
Mm

Polypodium macrocephala

Published by Robert Smith & Co. London 1820

W. Smith del.

li



1. *Anemone angustifolia*.

2. *Calamagrostis flaccuosa*.

3. *Galatella juncea*.

Published by Parbury Allen & Co. Londonhall St.



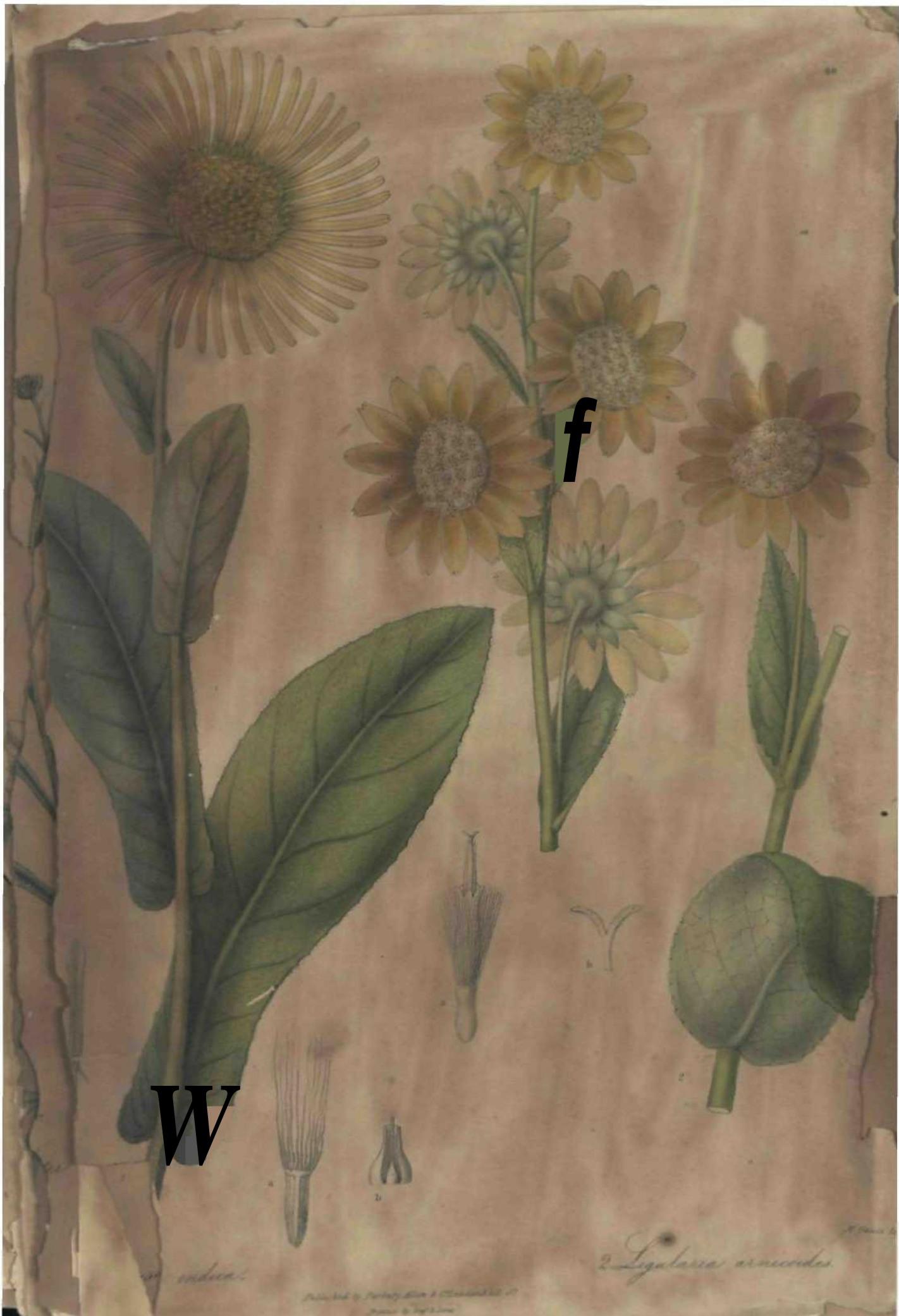
Aptodesis graphaloides.

Chaptalia gossypina.

Illustrated by Frederick Allcock & C. S. Sclater

Printed by G. S. Sclater

J. Gussone del.



W

f

Ligularia indica

Ligularia arneoides

Painted by Philip Miller & Charles Delessert del. et sculp. by J. G. Smith



Malvidium Macrochaetum.

M. sagittatum.

M. Macrochaetum



1. *Campanula Kashmirana.*

2. *Codonopsis rotundifolia.*

Collected by Roxburgh & C. 1780

J. Smith del.



Author of Drawings.

Leonida fastigiata

2. *Gaultheria normata* 3. *G. trichophylla*

Painted by Philip Black & J. Lindholm 18

Printed by J. G. & Co.



Rhododendron lepidotum

Rhododendron anthopogon

London, printed by W. Baskin, 1794.

Printed by W. Baskin.



Syringua

Syringua Emarginata

Painted by Robert Sims & Co. London
Engraved by J. G. Smith

1840



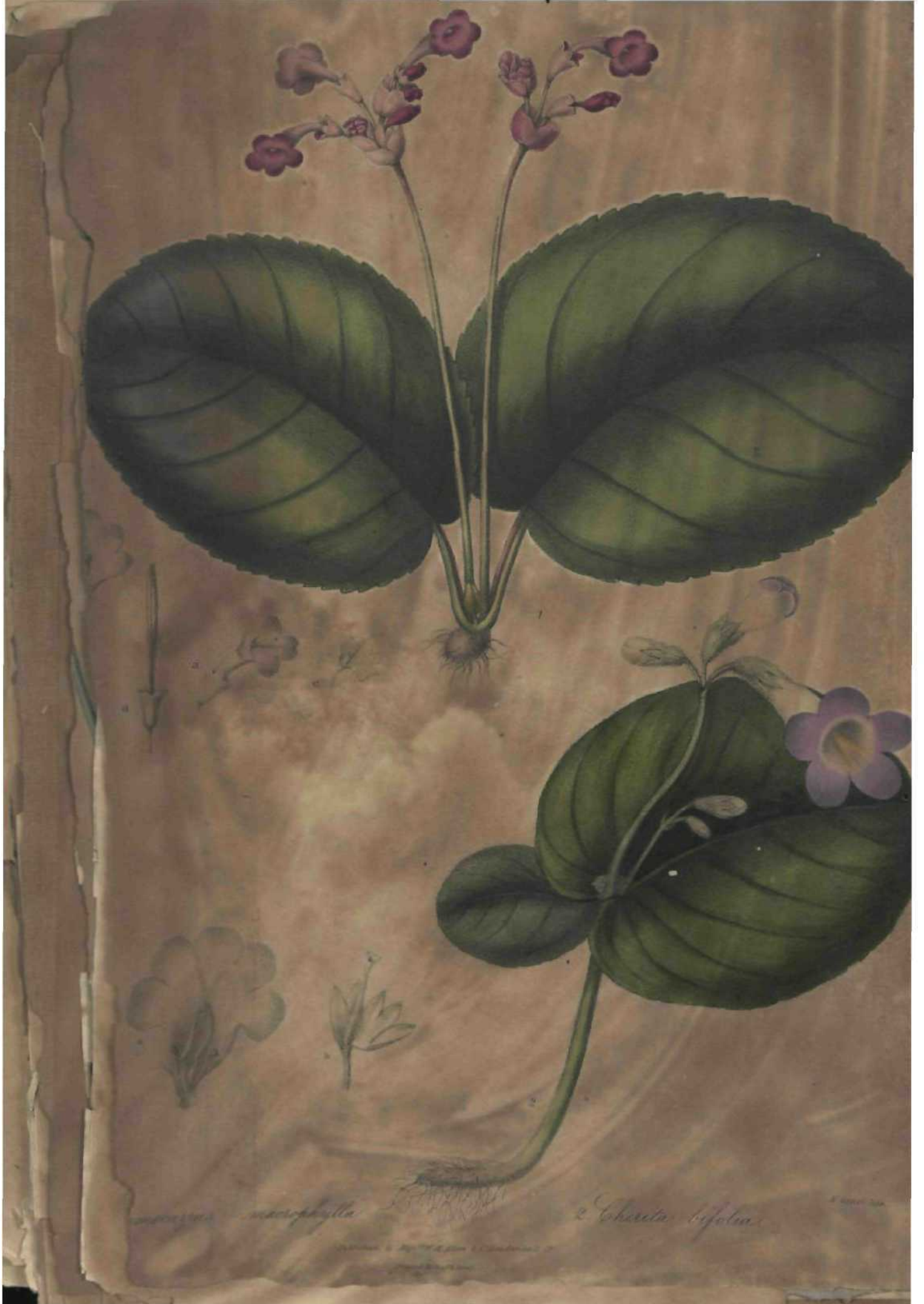
Heliotropium Brunerianum.

Cseropigia Waltheri.



1. *Cyananthus lobata*. 2. *C. integra*. 3. *Codonopsis ovata*.

Painted by ...
 Printed by ...



... macrophylla

2. *Charita bifolia*



Ampicoma arguta



Cnemidophorus superbus

Published by Perry & Co. 17, Cross Street, London, W.C.



Primula rosea



Primula eliptica



Phlox Kashmiriana

Salvia hiand.

Del. and Col. by John Sims & Co. London 1847



Primula oblongifolia & *P. purpurea*

Illustrated by Barbara Bunsell & J. C. L. Smith

Printed by J. G. Smith



Rheum Spiciforme

London, Published by Cary, Blanch & Co. Ludlow-hall Street

Painted by G. A. S. P. 1840



Rheum Webbianum

2. *Balanophora dioica*



1. *Thibaudia variegata*

2. *Gaylussacia serrata*

Painted by J. G. Smith & Co. London 1840
Engraved by J. G. Smith & Co. London 1840



1. *Polygonum chinense*

2. *Polygonum racemosum*

3. *P. Brunonis*

Painted by Mrs. J. S. Williams & C. L. Williams
Engraved by J. S. Williams



Clausena parryana

Daphne mucronata

Painted by Miss M. M. M. & C. G. ...

K. ...



Euphorbia pentagona. 2. *E. humilis* 3. *E. nana* 4. *E. Kashmiriana*.

Published by W.C. & A.R. Allen, 2, Chandernagore, S.



Patanjura Buchanana

Collected by ...

Painted by ...





Asplenium adnigrum & Lantana delicia

Asplenium Cochinchinense



1. *Pinus Khatson.*

2. *Quercus dentata.*
= *Q. velutina* Link

f

4



Populus alba & *Patanera insignis* S.F. Wallich

Painted by Mrs. W. E. Hill & C. L. L. L. L.





1. *Pinus longifolia.*

2. *Pinus Gerardiana.*

Pinus longifolia & *Pinus Gerardiana* by J. G. Smith del. & J. G. Smith sculp.



Abies Pindrow

Published by J. G. & C. W. Smith, London
Printed by J. G. & C. W. Smith



2. *Peristylus goodenoides*.

3. *Hermeneum graminum*.

Peristylus

Published by Wm. B. E. Smith & Co. New York

peristylus

£



1. *Cystopora Flava*

2. *Pseudobulbium alpestre*

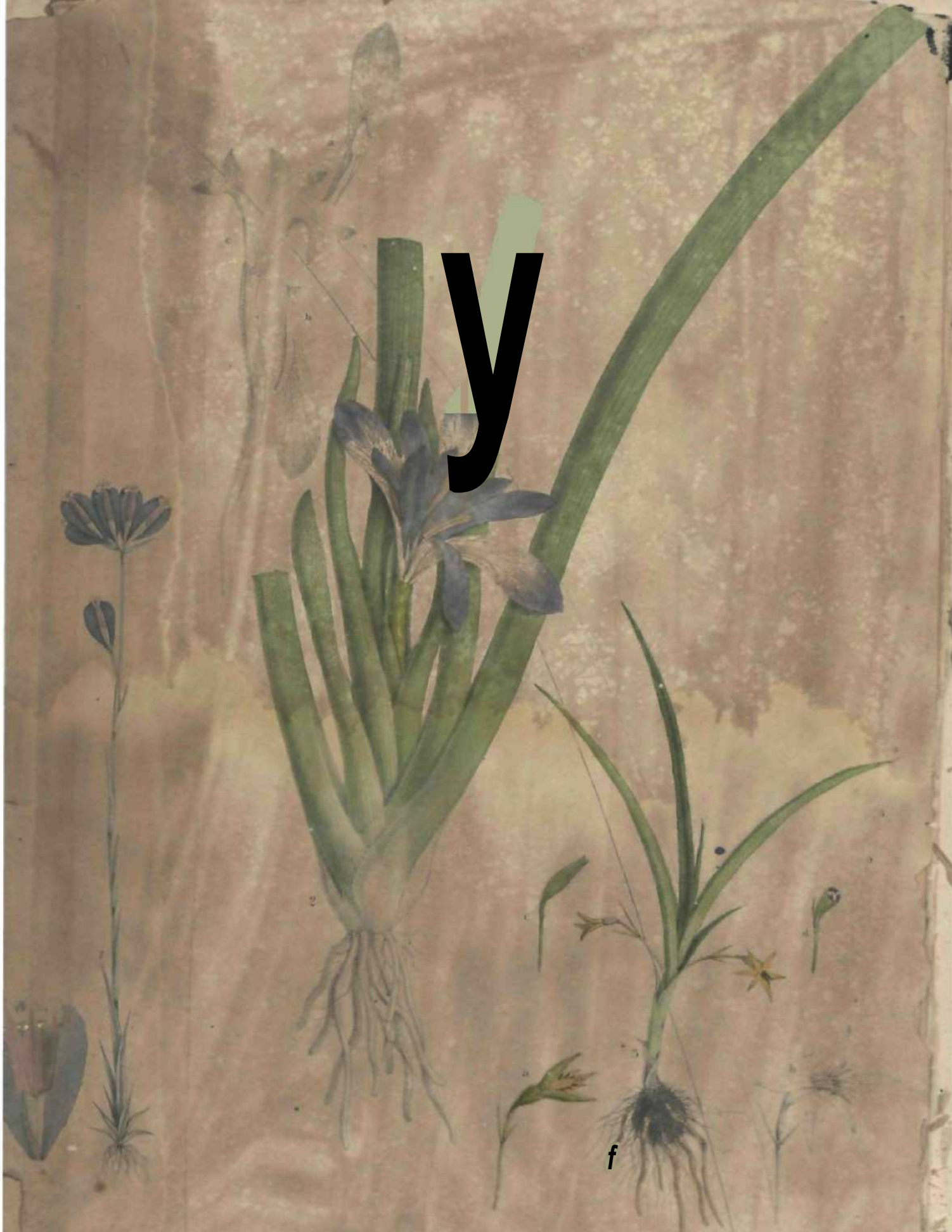


R. alpinus
R. lanatus (L.) DC. 561
R. spuala

R. lanatus (L.) DC. 561



Iris sibirica var. *Kashmirensis*. 2. *Iris Nepalensis*.



y

f

1. *Iris sibirica* 2. *Iris longifolia* 3. *Iris pumila*



Fritillaria thymoides

Fritillaria verticillata



1. *Trillium Govanianum*

2. *Lycopodium Himalense*

3. *L. Khandavurensis*

Published by Robert Wall & Co. London 1852



1. *Stemmatococcus maculatus*.

2. *Stemmatococcus*.

Stemmatococcus maculatus (L.) Merr.



Antennaria racemulata

Gagea degans

Mardiannia scapiflora

Painted by Thomas Sturt & Co. London 1837



1. *Carya acuminata*

2. *Hypericum japonicum*

Published by the Smithsonian Institution, Washington, D.C.



1. Eriocaulon 2. Lolium 3. Hordeum 4. Andropogon 5. Calamis Aromaticus

Printed by J. Smith, at the Office of the Society for the Propagation of the Gospel, in Great Britain.



BOOK CARD



Jadfaa Botaek Garden Library
BOTANICAL SOKVEY OF MADIA

581.9(546)
Call No. Roy, J. Acc. No. B2378

Author Roy, J. F.

Title Illustrations of Botany
& other branches of Natural

History of the Flora of India
Name of Borrower/Code No. Date of Issue Date of Return

Dr. N.C. Majumdar 24.5.67 (L-5) Returned

Mrs. S.P. Banerjee 23.9.72 29.1.76
